

2019-20 Budget Profile



USD #368 - Paola



School Finance
Kansas State Department of Education
Landon State Office Building
900 SW Jackson Street, Suite 356
Topeka, Kansas 66612-1212

www.ksde.org

Order of Contents

- Budget General Information (characteristics of district)
- Supplemental Information for Tables in *Summary of Expenditures*
- KSDE Website Information Available
- Summary of Expenditures (Sumexpen.xlsx)

2019-20 Budget General Information

USD #: 368

Introduction

Unified School District 368 serves students and families in a 200 square mile area of Paola, Kansas, in Miami County and part of Franklin County. Approximately 2000 kindergarten through grade 12 students attend one of four district attendance centers. Students in Kindergarten through grade 2 attend Cottonwood Elementary School. Grades 3 through 5 students attend Sunflower Elementary School. Students in grades 6 through 8 attend Paola Middle School. Paola High School is a 4A school, serving students in grades 9 through 12. In addition, the district sponsors Adult Education, Parents-As-Teachers, and East Central Kansas Special Education Cooperative. The district is an integral part of a progressive community located twenty minutes south of the Kansas City suburban area. Paola is a great place to live, where families, businesses, and the community collaborate with the schools to enhance the development of students.

Board Members

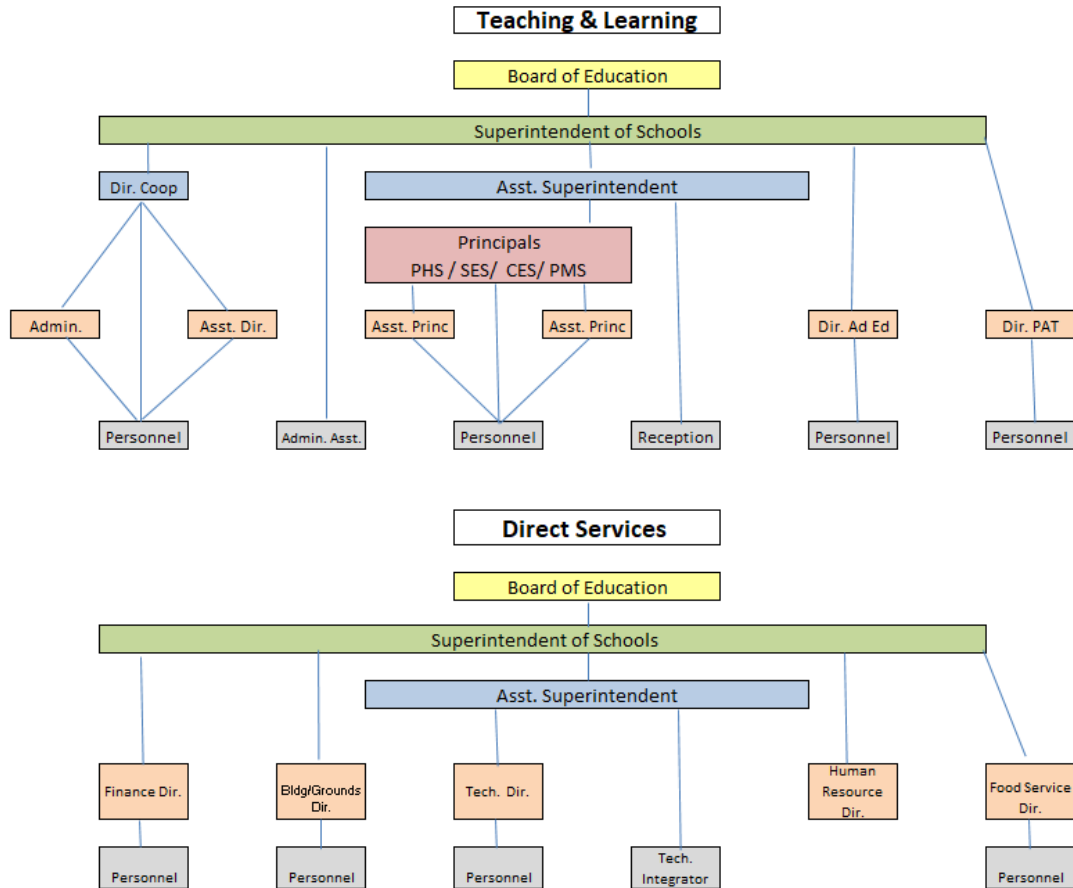
District #1	Cathy Macfarlane	cathy_macfarlane@usd368.org
District #2	Scott Golubski	scott_golubski@usd368.org
District #3	Tim Kelley	tim_kelley@usd368.org
District #4	Kelly Franke	kelly_franke@usd368.org
District #5	Randy Rausch	randy_rausch@usd368.org
District #6	Greg Cole	greg_cole@usd368.org
At-Large	Amanda Martell	amanda_martell@usd368.org

Key Staff

Superintendent
Assistant Superintendent
Director of Business & Finance/Clerk
Director of East Central Kansas Special Education Cooperative
Director of Human Resources
Director of Maintenance
Director of Nutrition Services
Director of Technology
Board of Education Treasurer
Administrative Assistant to the Superintendent/Deputy Clerk

Matt Meek
Tammy Thomasson
Jimmy Hay
Michael Hughes
Brenda Caldwell
Chris Schroeder
Elaine Harris
Tom Pfaltzgraff
Pam Kline
Lorlei Crum

PAOLA USD 368 ORGANIZATIONAL CHART



The District's Accomplishments and Challenges

Accomplishments:

District Vision:

The staff is dedicated to the District Vision of “Ensuring Success for all Students”.

Paola Public Schools Believe:

- every student can learn.
- in a commitment to a shared vision.
- in continuous student and staff learning.
- in valuing diversity of people and ideas.
- modern technology is essential for learning.
- in a shared responsibility for growth and achievement.

Staff and students continue to uphold the district’s mission of striving for academic success and personal growth for every student. This is accomplished through the constant review of standards and curriculum materials being used to align with those standards. Staff continually strives to

improve instruction and programs. A non-inclusive list of academic and athletic activities available to students is listed below:

Elementary

- Buddy Benches
- Community Service Partnership
- DARE
- Elizabeth Layton Community Health Partnership
- Girls on the Run
- Honor Choir
- Student Leadership Program
- Night at the Museum
- Panther Families
- Power Hour
- WatchDOGS
- One-to-one Chromebook (3rd-5th Grades)

Middle School

- Athletic Activities
- HOPE
- KAYS
- Kid Wind
- MakerSpace
- Performing Arts
- Podcast Program
- Pride Time
- SADD
- Scholars Bowl
- STEM LAB
- One-to-one Chromebook (6th-8th Grades)

High School

- Athletic Activities
- Community Service
- FCCLA
- FFA
- Students' Individual Plan of Study
- Journalism Production
- KAYS
- National Honor Society
- Performing Arts
- Skills USA
- Scholars Bowl
- One-to-one Chromebook (9th-12th Grades)

Successes:

The district is in year five of the new Kansas Education Systems Accreditation model. Goal areas revolve around Relationships and Rigor. Each school has their own goals that feed into the two district goals that promote the Board of Education goals listed below:

- Increase percentage of students academically on or above grade level.
- Improve communication between community, staff, students, and parents.
- Provide innovative teaching and learning through use of 21st Century Skills.
- At the middle and high school levels, utilize Individual Plans of Study that maximize educational opportunities.

Actions are occurring and activities are continually implemented for reaching these goals. The administration and staff continue to enhance programs and strategies related to the goals.

Key Success Indicators:

- Graduation Rate: 93.4%
- District ACT Average: 21.5
- 2016 Postsecondary Effectiveness Rate: 59.6%
- Five Year Postsecondary Effectiveness Rate: 53%

Challenges:

Meeting the needs of an ever changing population and continuing to communicate using new technologies requires district staff to make sure information is up-to-date on our student information system, website, and social media, in addition to traditional communication tools.

A major challenge facing the district is the rising cost of health insurance and the need to stay competitive in both salary and benefits to recruit a shrinking talent pool of teachers. It is a delicate balance to continue to increase salaries along with maintain a competitive benefits package to recruit and retain quality staff. Although we continue to have highly qualified teachers in every classroom, the number of applicants for many positions are often only two or three and only one qualified applicant for a few positions.

Interventions to support all students will continually be monitored to enhance students' skills related to academics, critical thinking, creativity, innovation and problem solving skills.

Supplemental Information for the Following Tables

1. Summary of Total Expenditures by Function (All Funds)
2. Summary of General Fund Expenditures by Function
3. Summary of Supplemental General Fund Expenditures by Function
4. Summary of General and Supplemental General Fund Expenditures by Function
5. Summary of Special Education Fund by Function
6. Instruction Expenditures (1000)
7. Student Support Expenditures (2100)
8. Instructional Support Expenditures (2200)
9. General Administration Expenditures (2300)
10. School Administration Expenditures (2400)
11. Central Services Expenditures (2500)
12. Operations and Maintenance Expenditures (2600)
13. Transportation Expenditures (2700)
14. Other Support Services Expenditures (2900)
15. Food Service Expenditures (3100)
16. Community Services Operations (3300)
17. Capital Improvements (4000)
18. Debt Services (5100)
19. Miscellaneous Information – Transfers (5200)
20. Miscellaneous Information Unencumbered Cash Balance by Fund
21. Reserve Funds Unencumbered Cash Balance
22. Other Information – Enrollment Information
23. Miscellaneous Information Mill Rates by Fund
24. Other Information – Assessed Valuation and Bonded Indebtedness

Note: FTE is the audited enrollment 9/20 and 2/20 (if applicable) and estimated for the budget year, which includes 4yr old at-risk and virtual enrollment. Enrollment does not include non-funded preschool. Beginning 2017-18, full-day Kindergarten is 1.0 FTE. This information is used for calculating Amount Per Pupil for Sumexpen.xlsx and Budget At A Glance (BAG).

KSDE Website Information Available

K-12 Statistics (Building, District or State Totals) website below:

<http://svapp15586.ksde.org/k12/k12.aspx>

- Attendance / Enrollment Reports
- Staff Reports
- Graduates / Dropouts Reports
- Crime / Violence Reports

School Finance Reports and Publications website below:

<http://www.ksde.org/Agency/Fiscal-and-Administrative-Services/School-Finance/Reports-and-Publications>

- Assessed Valuation
- Cash Balances
- Headcount Enrollment
- Mill Levies
- Personnel (Certified/Non-Certified)
- Salary Reports

Kansas Building Report Card website below:

<http://ksreportcard.ksde.org/>

- Attendance Rate
- Graduation Rate
- Dropout Rate
- School Violence
- Assessments
 - Reading
 - Mathematics
 - Writing
- Graduates Passing Adv. Science Courses
- Graduates Passing Adv. Math Courses