

# 2021-2022 Budget Profile



USD #368 - Paola

# Order of Contents

- Budget General Information (characteristics of district)
- Supplemental Information for Tables in *Summary of Expenditures*
- KSDE Website Information Available
- Summary of Expenditures (Sumexpen.xlsx)

**2021-2022 Budget General Information**  
**USD #368**

**Board Members**

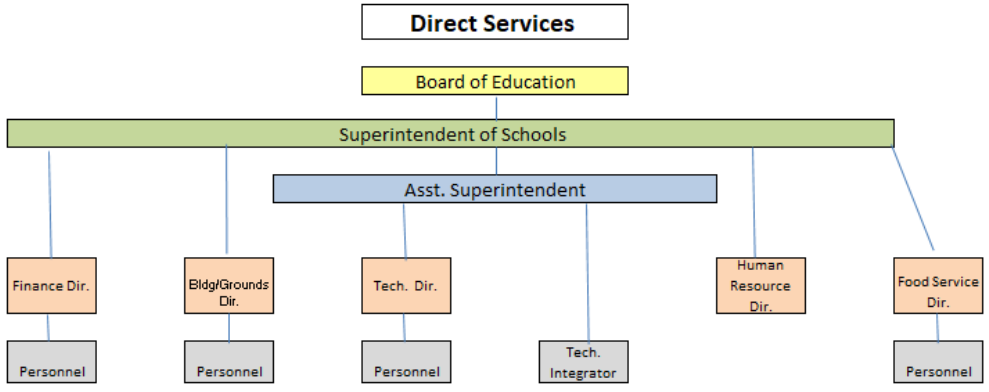
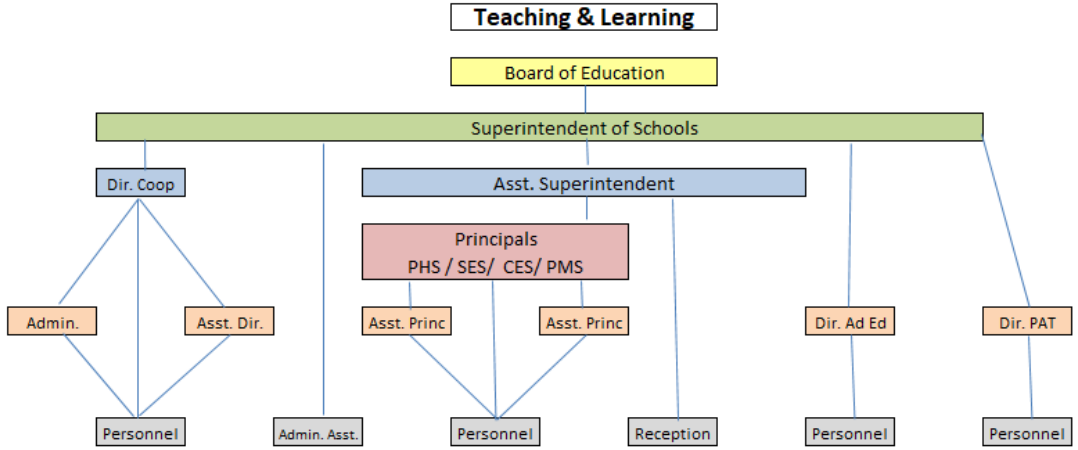
District #1	Cathy Macfarlane	cathy_macfarlane@usd368.org
District #2	Scott Golubski	scott_golubski@usd368.org
District #3	Tim Kelley	tim_kelley@usd368.org
District #4	Kelly Franke	kelly_frank@usd368.org
District #5	Randy Rausch	randy_rausch@usd368.org
District #6	Michelle Latto	michelle_latto@usd368.org
At-Large	Amanda Martell	amanda_martell@usd368.org

**Key Staff**

Superintendent  
Assistant Superintendent  
Director of Business & Finance/Clerk  
Director of East Central Kansas Special Education Cooperative  
Director of Human Resources  
Director of Maintenance  
Director of Nutrition Services  
Director of Technology  
Board of Education Treasurer  
Administrative Assistant to the Superintendent/Deputy Clerk

Matt Meek  
Tammy Thomasson  
Jimmy Hay  
Vicki Vossler  
Brenda Caldwell  
Chris Schroeder  
Bill Rosich  
Tom Pfaltzgraff  
Pam Kline  
Loralei Crum

# PAOLA USD 368 ORGANIZATIONAL CHART



## The District's Accomplishments and Challenges

**Accomplishments:** District Vision:

The staff is dedicated to the District Vision of “Ensuring Success for all Students”.

Paola Public Schools Believe:

- every student can learn.
- in a commitment to a shared vision.
- in continuous student and staff learning.
- in valuing diversity of people and ideas.
- modern technology is essential for learning.
- in a shared responsibility for growth and achievement.

Staff and students continue to uphold the district's mission of striving for academic success and personal growth for every student. This is accomplished through the constant review of standards and curriculum materials being used to align with those standards. Staff continually strives to improve instruction and programs. A non-inclusive list of academic and athletic activities available to students is listed below:

### Elementary

- Buddy Benches
- Community Service Partnership
- DARE
- Elizabeth Layton Community Health Partnership
- Girls on the Run
- Honor Choir
- Student Leadership Program
- Panther Families
- Power Hour
- WatchDOGS
- One-to-one Chromebook (K-5<sup>th</sup> Grades)
- Teammates Program

### Middle School

- Athletic Activities
- HOPE
- KAYS
- Teammates
- MakerSpace
- Performing Arts
- Podcast Program
- Pride Time
- SADD
- Scholars Bowl
- STEM LAB
- One-to-one Chromebook (6<sup>th</sup>-8<sup>th</sup> Grades)

### High School

- Athletic Activities
- Community Service
- FCCLA
- FFA
- Students' Individual Plan of Study
- Journalism Production
- KAYS
- National Honor Society
- Performing Arts
- Skills USA
- Scholars Bowl
- One-to-one Chromebook (9<sup>th</sup>-12<sup>th</sup> Grades)

**Successes:**

The 2021-2022 school year will begin the next five-year accreditation cycle and new goals have been established in the areas of Kindergarten Readiness and Social Emotional Learning.

Key Success Indicators:

- Five Year Graduation Average: 93%
- District ACT Average: 20.8
- Five Year Postsecondary Effectiveness Rate: 55%

Star Recognition Program

- Postsecondary Effectiveness Bronze
- Graduation Bronze
- Prepared for High School Graduation Copper

**Challenges:**

Major challenges facing the district are decreased student population the last three years and the rising cost of health insurance. These issues make it hard to stay competitive in both salary and benefits to recruit a shrinking talent pool of teachers. It is a delicate balance to continue to increase salaries along with maintain a competitive benefits package to recruit and retain quality staff. Although we continue to have highly qualified teachers in every classroom, the number of applicants for many positions are often only two or three and only one qualified applicant for a few positions. For the first time this year, we have a teaching position that will remain open due to no qualified candidates for the job. Besides difficulty recruiting teachers, many classified positions remain open due to lack of candidates, even despite an increased recruiting effort.

## Supplemental Information for the Following Tables

1. Summary of Total Expenditures by Function (All Funds)
2. Summary of General Fund Expenditures by Function
3. Summary of Supplemental General Fund Expenditures by Function
4. Summary of General and Supplemental General Fund Expenditures by Function
5. Summary of Special Education Fund by Function
6. Instruction Expenditures (1000)
7. Student Support Expenditures (2100)
8. Instructional Support Expenditures (2200)
9. General Administration Expenditures (2300)
10. School Administration Expenditures (2400)
11. Central Services Expenditures (2500)
12. Operations and Maintenance Expenditures (2600)
13. Transportation Expenditures (2700)
14. Other Support Services Expenditures (2900)
15. Food Service Expenditures (3100)
16. Community Services Operations (3300)
17. Capital Improvements (4000)
18. Debt Services (5100)
19. Miscellaneous Information – Transfers (5200)
20. Miscellaneous Information Unencumbered Cash Balance by Fund
21. Reserve Funds Unencumbered Cash Balance
22. Other Information – Enrollment Information
23. Miscellaneous Information Mill Rates by Fund
24. Other Information – Assessed Valuation and Bonded Indebtedness

**Note: FTE is the audited enrollment 9/20 and 2/20 (if applicable) and estimated for the budget year, which includes 4yr old at-risk and virtual enrollment. Enrollment does not include non-funded preschool. Beginning 2017-18, full-day Kindergarten is 1.0 FTE. This information is used for calculating Amount Per Pupil for Sumexpen.xlsx and Budget At A Glance (BAG).**

## **KSDE Website Information Available**

### **K-12 Statistics (Building, District or State Totals) Report Generator:**

[https://datacentral.ksde.org/report\\_gen.aspx](https://datacentral.ksde.org/report_gen.aspx)

- Attendance / Enrollment Reports
- Staff Reports
- Graduates / Dropouts Reports
- Crime / Violence Reports

### **School Finance Reports (Data Central) website below:**

<https://datacentral.ksde.org/default.aspx>

- Assessed Valuation
- Cash Balances
- Headcount Enrollment
- Mill Levies
- Personnel (Certified/Non-Certified)
- Salary Reports

### **Kansas Building Report Card website below:**

<http://ksreportcard.ksde.org/>

- Attendance Rate
- Graduation Rate
- Dropout Rate
- School Violence
- Assessments
  - Reading
  - Mathematics
  - Writing
- Graduates Passing Adv. Science Courses
- Graduates Passing Adv. Math Courses

### **Accountability Reports website below:**

<https://datacentral.ksde.org/accountability.aspx>

- Performance Accountability Reports
- Financial Accountability Reports
- Longitudinal Achievement Reports