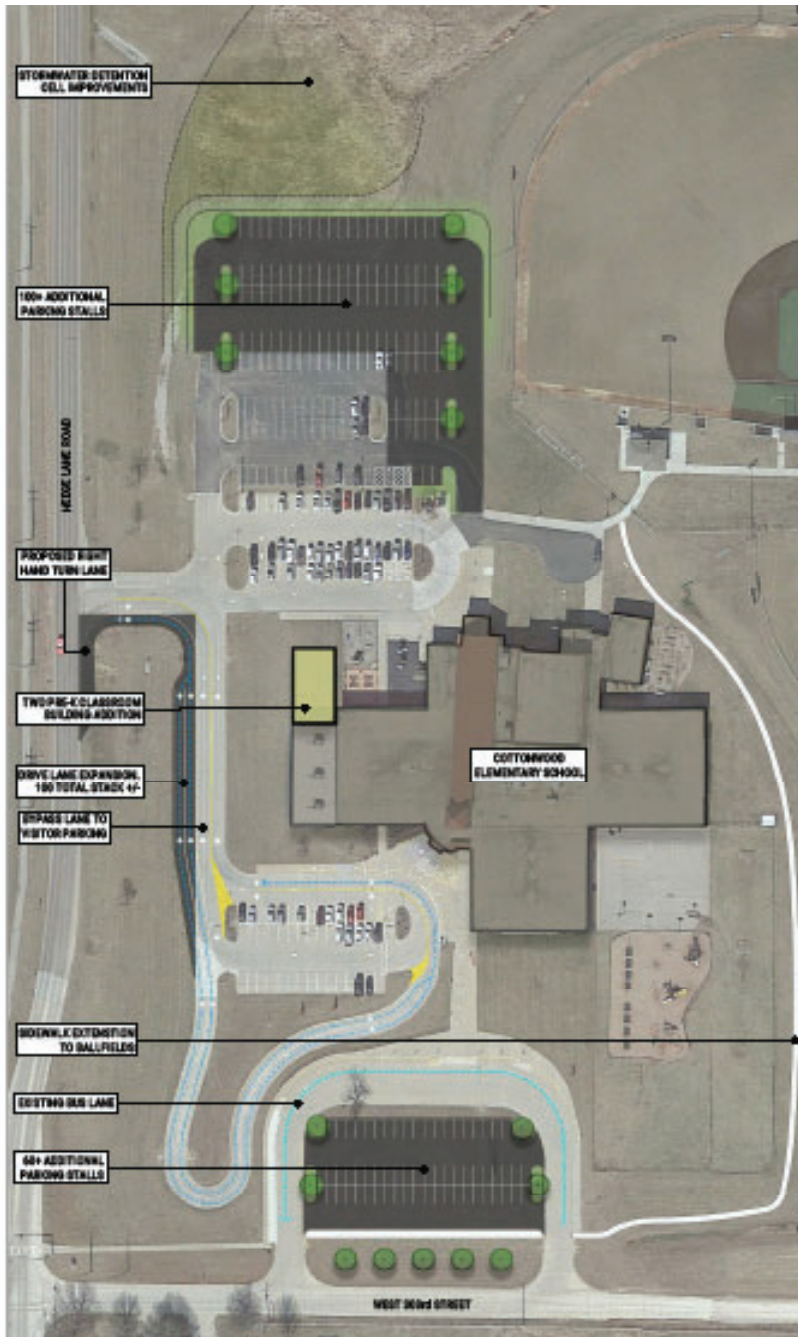


COTTONWOOD ELEMENTARY SCHOOL SITE CIRCULATION IMPROVEMENTS



- **160+ parking stalls added for school events and ballfields**
- **Expanded pickup + dropoff lanes allow for 15 additional cars to alleviate congestion on Hedge Lane Road.**

COTTONWOOD ELEMENTARY SCHOOL ADDITIONAL EARLY CHILDHOOD CLASSROOMS



Revitalized Early Education:

The district currently has two classrooms dedicated to special education pre-school. Only students identified as having special needs and on an IEP are able to participate in this program. There are many students who do not qualify as special education, but are at-risk of not being ready for Kindergarten. Additional space would allow the district to expand early childhood education to these at-risk students and peer models and help fill the gap of Head Start closing and not enough pre-school seats available in our community.



*after images are representative of project scope

PAOLA HIGH SCHOOL CAREER & TECHNICAL EDUCATION IMPROVEMENTS

Family Consumer Science:



Electronics & Electrical:



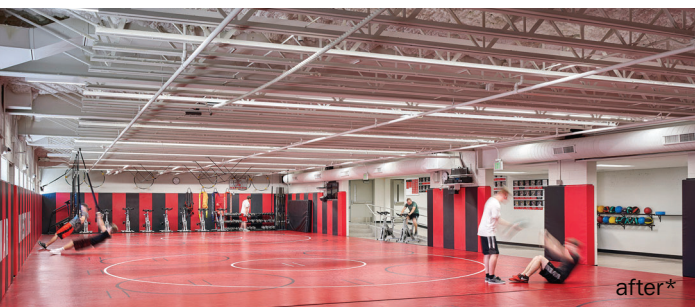
*after images are representative of project scope

PAOLA HIGH SCHOOL MULTIPURPOSE BUILDING TRANSFORMATION

Weight Room:



Wrestling Room:



Multipurpose Room Conversion:

The existing High School Multipurpose Room will be reconfigured to accommodate weights and strength conditioning of the ground level, while a new second floor slab will be provided to accommodate wrestling practice within the existing building envelope. The existing structure will be modified to accommodate the second-floor level. HVAC and plumbing systems will be updated as well. The re-purposed facility will result in a more efficient use of the existing facility within the existing building footprint.

*after images are representative of project scope

PAOLA MIDDLE SCHOOL - MEDIA CENTER & CAFETERIA COMMONS IMPROVEMENTS

Media Center:



Cafeteria Commons:



*after images are representative of project scope